



# SAGE - Where Inspiration Finds You

## Annual Report 2019-2020

---



# LET'S RESTORE

This is a multi-generational moment. The global health pandemic and other cascading challenges have rocked all of us and have challenged me personally. As a husband, father, and son, I've experienced stress due to the shutdown of schools, social distance from loved ones, and fear for friends impacted by sickness, fires, and social unrest. With challenges, however, come new opportunities.

This is why our work together matters. When the going gets tough, we're reminded of the obstacles prior generations overcame to sow seeds of opportunity for the next generation. We're reminded of the need to build bridges across age, race, and other differences. We're reminded of the role older adults play as reflected in the Greek Proverb: *A society grows great when its elders plant trees whose shade they know they shall never sit in.*

This year, we've been deeply moved by the work of our members, volunteers and friends who care and support people today, and who continue to make enduring contributions for the future. I am heartened by our Legacy

Fellows who led community benefit projects through the pandemic. I am inspired by the many individuals and organizations involved in our innovation teams, including our Citizen Project focused on bridging political divides, and our other teams that are actively helping students impacted by school shutdowns, expanding mobility through access to electric vehicles, and teaching about climate solutions in schools.

With your support and encouragement, SAGE has transformed all of our work from in-person to online in a few short months. This year we have benefited from the vision and steady support from our board of directors and the continued engagement and advice from our young leaders advisory board. Thank you for your friendship, and for supporting our work across generations.

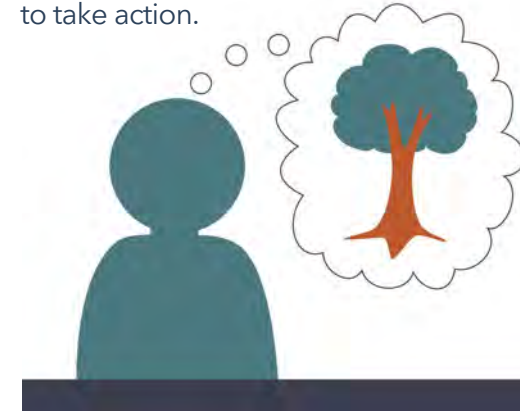


*Steve*

Steve Higgs  
Executive Director

SAGE inspires people over fifty to give forward with their time, money and voice so that younger and future generations can thrive. Every day, we inspire people to plant their own tree of opportunity for the future by helping them identify their priorities, learn about opportunities for involvement, and engage. This year, more than 1,000 people participated in our programs. Thanks for giving forward through SAGE!

**Visiting SAGE** speakers raise awareness and inspire people to take action.



**Connect & Engage** discussions and workshops offer advice and pathways to make a difference.



**Legacy Fellowships** train and support leaders over six months to launch community benefit projects.



**Innovation Teams** engage many people and organizations to achieve shared goals.





## 2019 Visiting SAGE inspires us to protect oceans



Visiting SAGE speakers elevate major challenges facing the future and opportunities to make a difference. This year, SAGE featured global oceans champion, Dr. Sylvia Earle as our Visiting SAGE. Popularly called *Her Deepness* by the New Yorker and the New York Times, Earle is an inspiration to millions for her leadership to conserve the world's oceans.

Speaking to nearly 1,000 guests, Dr. Earle reminded us that with every breath we take and every drop of water we drink, we are dependent on our living oceans. We must take action now to restore the blue heart of our planet and to secure an enduring future for everything we care about.

SAGE was proud to co-host this event with the Oregon Coast Aquarium, and to offer a large volunteer expo featuring service roles to protect our oceans, a student marine conservation science fair, and highlighting Sing Portland, an inspirational and intergenerational choir.

*I was so excited that three generations of our family could attend the Visiting SAGE featuring Dr. Earle to be informed and inspired as individuals and as a family to act on this urgent knowledge.*

—Katherine McAnulty



## Legacy Fellow celebrates a generational milestone

Nearly 50 years ago, the world experienced a watershed moment – the first Earth Day. On April 22, 1970, 20 million Americans took to the streets in coast-to-coast rallies to protect our environment. By the end of that year, the birth of the modern environmental movement led to the creation of the EPA, the passage of the Clean Air, Clean Water, and Endangered Species Acts.

This year, to honor the 50th Anniversary of Earth Day, our Legacy Fellow Bethany Shetterly Thomas and her steering committee engaged over 50 nonprofits to celebrate Earth Day and to increase business and individual support for organizations working to create a better world. Through her leadership, 200 businesses made gifts to raise more than \$100,000 for participating organizations in honor of Earth Day. SAGE was proud to serve as the fiscal sponsor to the campaign.

Now in its sixth year, SAGE offers the Legacy Fellowship because we believe individuals play a major role in advancing innovative projects that create opportunity for the future. We have proudly trained and supported over 60 fellows, many of whom have led major initiatives such as creating public parks, building community gardens, and raising thousands of dollars for students to attend college.

SAGE provides support and encouragement for fellows to develop and lead their dream projects in challenging times.



*The SAGE Legacy Fellowship helped me navigate unforeseen challenges caused by the pandemic, including canceling our major Earth Day celebration and pivoting to a successful social media campaign to inspire personal actions to care for the Earth.*

—Bethany Shetterly Thomas



# Bridging divides and building connections

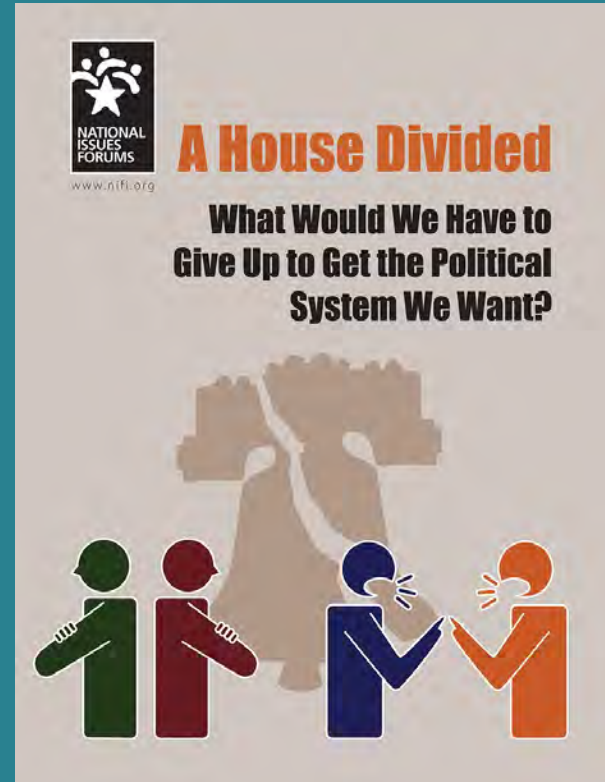
Political polarization creates policy gridlock, undermines our trust and divides us as a nation. Among our initiatives, SAGE leads a team known as the Citizen Project – a series of educational events that respond to long-time trends showing that Americans are growing increasingly divided politically and more contemptuous toward one another.

Through our events, we collect and share examples of actions that individuals can take to build bridges (e.g., learning about self, listening to diverse views, and identifying areas to work together). The program creates opportunities for older adults to pursue leadership roles in bridging divides—whether generational, racial or political.

This year, we hosted twelve community discussions and convened a major gathering with nearly 50 organizational leaders and volunteers from across Oregon to collaborate on efforts to foster dialogue across divides.

*Thank you for inviting me to attend SAGE's conversation on bridging political divides—it was an honest, respectful sharing among participants.*

—Craig Kolins



SAGE LAB Leader, Sharona Shnyder, and SAGE Board Member, Neal Naigus, co-facilitate a Citizen Project event together.

# Special thanks for giving forward

SAGE greatly appreciates gifts of time, money and expertise from all our supporters. The following individuals, foundations, and organizations made financial gifts to support our work between July 1, 2019 and June 30, 2020.

## FOUNDATIONS & ORGANIZATIONS

Cambia Health Solutions Fund of Oregon Community Foundation  
 DEQ's Oregon Clean Fuels Program via the PGE Drive Change Fund  
 Earth Day Oregon Fund of Oregon Community Foundation  
 William G. Gilmore Foundation  
 Elizabeth C Pease Memorial Fund for Education and Social Welfare  
 National Issues Forum Institute  
 OCF Joseph E. Weston Public Foundation  
 PayPal Giving Fund  
 PGE Employee Giving Campaign

## INDIVIDUALS

### Founders

*Gifts of 2,500 or more*  
 Joy Bottinelli and William Howe  
 Nancy and Al Jubitz  
 Cecile and Ben Manny  
 Diane Ponti and Ward Greene  
 Susan and Richard Schubert  
 Elizabeth Schellberg and Gary Watkins  
 Lory and Paul Utz

### Legacy Circle

*Gifts of \$1,000 or more*  
 Tamara Crocker and Randy Sell  
 Elaine and Bill Hallmark  
 Barbara Hilyer and John Daggett  
 Cecelia and Robert Huntington  
 Jeanne Magmer  
 Connie and Doug Mc Dowell  
 Lynn Merrick and Michael Kronenthal

Lora and Jim Meyer  
 Jeanne and Dick Roy  
 Gay Hart and Robert Scanlan  
 Sandra and Marcus Wood

### SAGE Circle

*Gifts of \$500 or more*  
 Irene and Robert Dale  
 The Gun and Tom Denhart Family Fund  
 Kristen Grauer and Kellen Couturier  
 Barbara and James Kimberley  
 Greg Macpherson  
 Sue and John Sorensen

### Patron

*Gifts of \$250 or more*  
 Alain Bally  
 Christopher Byrne  
 Amy and Steve Higgs  
 Jan Jewett and Rick Nitti  
 David Parker  
 Madeleine and Brian Gully  
 Michelle Slater  
 Paula Malone

### Steward

*Gifts of \$100 or more*  
 Jan Baross  
 Kristi Barth  
 Kristin Bodiford  
 Sara Butcher and Christopher Canida  
 Craig Collins  
 Cheryl and Dennis Cone  
 Lori and Lee Davidson  
 Margot Fetz

Fran Finney and Vawter Parker  
 Anne Kendellen and Jonathan Harker  
 Barbara and William Harris  
 Mary Beth Henry  
 Nancy Hungerford  
 Michelle Hynes and Patrick Lemmon  
 Leslie Johnson and Tim Josi  
 Betsy and Marvin Kaiser  
 Jim Keegan  
 Jason Klein  
 Alyce LaGasse  
 Mary Lynn Obrien  
 Carolyn Peterson  
 Diane and Ralph Priest  
 Monica Rodal and Neal Naigus  
 Halle Mandel Sadle and Rick Sadle  
 Jennifer Dempsey Stein  
 Susan Stragnell  
 Jennifer Wagley  
 Sharon and Richard Weijo

### Advocate

*Gifts up to \$99*  
 Amazon Smile Foundation  
 Martha and Anthony Belluschi  
 Connie Christopher  
 Anne Elliott and Joe Dabek  
 Geri Hackett  
 Danielle and Blake Lessler  
 Mark McLeod  
 Wendy Mitchell  
 Trung Nguyen  
 Roberta and Edward Schwarz  
 Kristine and Michael Wilkins  
 Jon Zall  
 We also thank all our anonymous donors!

Thank you to our 100+ volunteers who collectively donated over 5,400 hours to SAGE, valued at over \$145,000!

## We are also grateful for our generous program sponsors.

We are proud to be a grantee of the PGE Drive Change Fund to expand education and access to electric vehicles. We are also excited to thank the following sponsors at our upcoming SAGE Awards which we postponed to November, 2020.



# We believe

each generation should improve the quality of life for the next.

# We believe

that elders make a difference for younger generations.

# We believe

everyone can give forward so future generations can thrive.

## Contact us and learn more

**Sign up for our newsletter** [Hello@WeAreSage.org](mailto>Hello@WeAreSage.org)

**Volunteer** [WeAreSage.org/volunteer](http://WeAreSage.org/volunteer)

**Give online** [WeAreSage.org/donate](http://WeAreSage.org/donate)

### Connect on social media

[Facebook.com/wearesage](https://www.facebook.com/wearesage)

[LinkedIn.com/company/genequity](https://www.linkedin.com/company/genequity)

[YouTube.com/user/SAGEGenEquity](https://www.youtube.com/user/SAGEGenEquity)



[WeAreSage.org](http://WeAreSage.org)

1515 SW Fifth Avenue, Suite 600

Portland, OR 97201

Phone: 971-717-6570