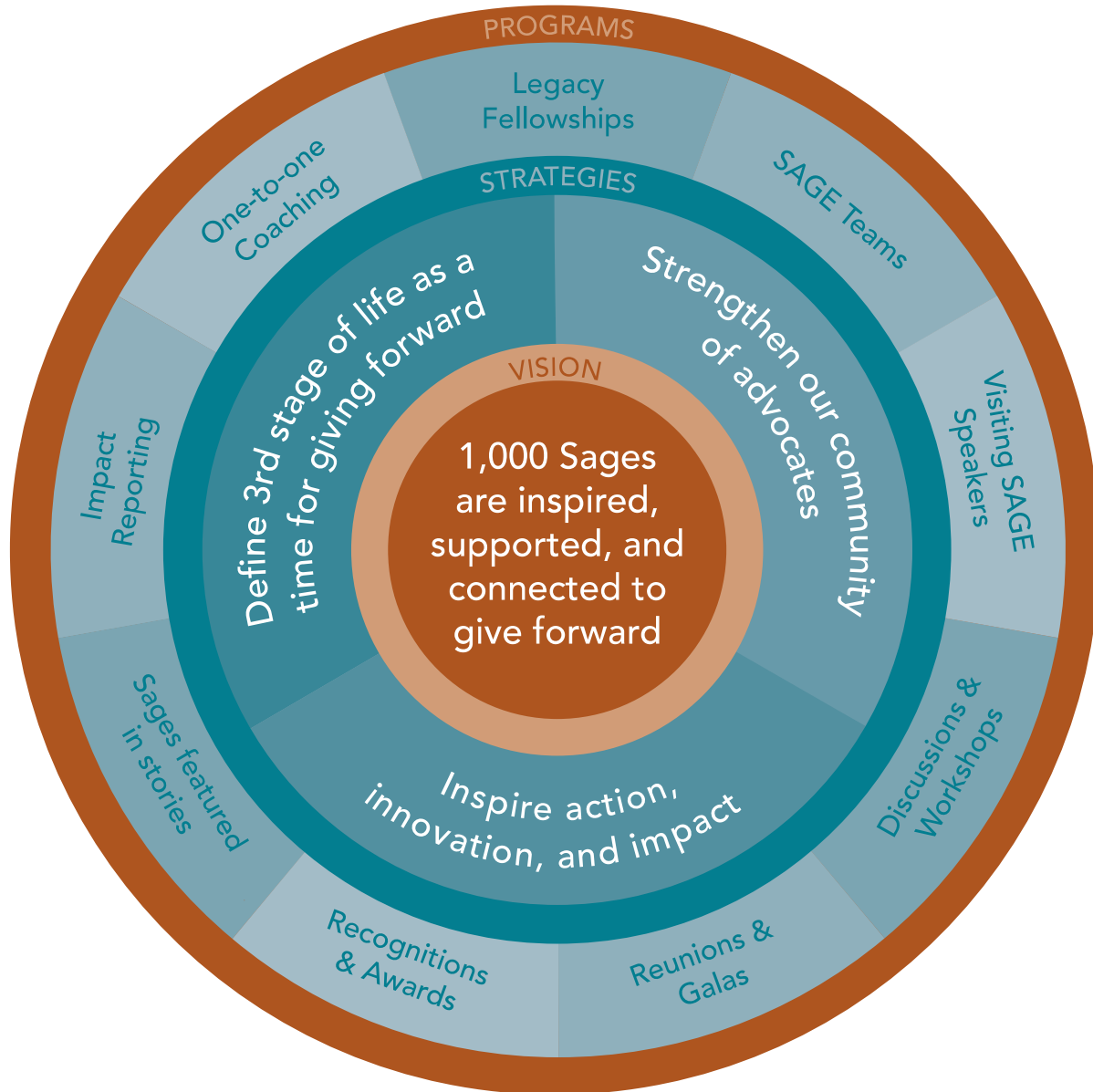




SAGE Strategic Plan Summary 2018-2021

We inspire people over fifty to give forward with their time, money and voice so that younger and future generations can thrive.

Our values: Community • Relationships • Equity • Inclusion • Legacy



3-year Target: Inspire, support and connect 250 Sages. Featured in Impact Reports to inspire others.

Results:

- Clear impact in SAGE's three priority areas: education, environment, economic opportunity
- A diverse and active community of Sages
- Elders seen and valued as vibrant contributors to a better world
- Sustainable financial resources to achieve SAGE's mission
- Strengthened intergenerational connections among our community

Internal work: Grow and sustain SAGE with new resources, shared leadership, continual learning